

RERA Reg. No. RAJ/P/2024/3391  
[www.rera.rajasthan.gov.in](http://www.rera.rajasthan.gov.in)

# ACROPOLIS

LUXURY HOMES

2 & 3 BHK Luxury Apartment at Mansarovar, Jaipur

Builders & Developers



Architects



Tushar Sogani Designs Pvt. Ltd.  
 400, F-72, "Suryoday"  
 Subhash Marg, C-scheme  
 Jaipur-302001  
 web: [www.tsdplarch.com](http://www.tsdplarch.com)

Booking Office

FEET & YARD GROUP  
 Opposite Vatsala Garden, Vande Mataram Road  
 Mansarovar, Jaipur.

Marketed by



—FIND YOUR PERFECT SPACE WITH F&Y—



live where luxury meets comforts...



**ACROPOLIS**  
LUXURY HOMES

Welcome to Acropolis Luxury Home, we provide an elevated lifestyle experience. From contemporary architecture to state-of-the-art amenities, we ensure a living environment that inspires peace and rejuvenation. Discover the perfect balance of modern design, convenience, and connectivity at Mansarovar's most coveted address. Step into a world where your aspirations come to life. Welcome home to Acropolis Luxury Home, where luxury finds its true expression.





- Thoughtfully Curated Amenities
- Security and Peace of Mind
- Convenient Location
- Wellness at Your Fingertips
- Space for Family Bonding
- Uncompromised Quality

Everything Required for a  
**PEACEFUL LIFE**  
is **HERE**

Discover the joy of harmonious living in a thoughtfully designed apartment community where peace and comfort come first. Our serene environment, well-maintained spaces, and respectful neighbourhood culture ensure a calm and stress-free lifestyle. Enjoy the perfect balance of privacy and community, where every resident contributes to a quiet, clean, and welcoming atmosphere. Embrace a peaceful life – right at home.



## KIDS PLAY AREA

Podium & Terrace Floor



## GYM

Stilt Floor



## FEEL

The Adrenaline Rush With Every Workout.

Step into a world of fitness and sophistication with our state-of-the-art luxury gym. Equipped with the latest machines, personal training options, and elegant interiors, it offers a premium environment for your wellness journey. From high-end equipment to serene workout spaces, every detail is designed to elevate your fitness experience in style and comfort.

## MULTI PURPOSE HALL

Podium Floor



## MINI THEATER

Stilt Floor



## ENJOY

The Comfort & Luxury Lifestyle Everyday.

Enjoy the magic of cinema in the comfort of your own community with our modern mini theater. Designed for an immersive viewing experience, it features plush seating, high-definition projection, and surround sound. Whether it's a movie night with family or a screening with friends, the mini theater offers the perfect setting for entertainment and relaxation.

## INDOOR GAME AREA

First Floor

### BOX CRICKET PITCH

Terrace Floor



## SWIMMING POOL

Stilt Floor



### CONVENIENCE STORE

Stilt Floor

**ENJOY**  
Games, Have Fun & Feel Relax.

Unwind and connect with friends and neighbors in our dedicated indoor games area. Enjoy classic favorites like chess, carrom, and more in a comfortable and relaxed setting. Whether you're looking to challenge your mind or simply have fun, our indoor games zone offers the perfect blend of entertainment and recreation for all ages.

**DIVE**  
in the Pool and Feel Relax & Cool.

Dive into relaxation with our beautifully maintained swimming pool, designed for both leisure and fitness. Whether you're swimming laps or unwinding by the water, the serene setting offers a perfect escape from daily stress. Enjoy a refreshing lifestyle with poolside comfort and a peaceful ambiance.

## MINI JOGGING TRACK

Podium Floor

## YOGA & MEDITATION

Podium & Terrace Floor



## SR. CITIZEN SEATING

Podium & Terrace Floor



## EV CHARGING POINT

Stilt Floor



**BREATHE**  
Deep and Discover yourself.

The yoga and jogging track facility offers a dedicated space for fitness and wellness. The yoga area provides a calm environment for practicing poses, breathing exercises, and meditation, promoting mental and physical balance. The jogging track encourages regular cardiovascular activity, helping improve stamina and overall health. Together, these facilities support a healthy lifestyle and cater to people of all ages.

**LIFESTYLE**  
that Defines Comfort & Satisfaction.

Senior citizen seating area is thoughtfully designed to provide comfort, safety, and relaxation for elderly residents. Equipped with ergonomic seating, shaded spots, and peaceful surroundings, it offers a perfect place for socializing, reading, or simply unwinding. This space promotes well-being and community bonding, ensuring seniors enjoy a serene and dignified lifestyle within the apartment.

## OPEN GATHERING & PARTY AREA

Terrace Floor

## GARDEN & GAZEBO

Podium Floor



**TRANSFORM**  
a Space into Luxury Life.

A rooftop party area in a luxury apartment adds a touch of elegance and leisure to modern living. Designed with stylish seating, ambient lighting, and scenic views, it offers a perfect space for social gatherings, celebrations, and relaxation. This facility enhances the lifestyle of residents by providing a private, open-air venue within the comfort of their home environment, ideal for hosting events in a sophisticated setting.

## AIR CONDITIONED LOBBY

Podium Floor



## DRIVERS LOUNGE

Basement

**STYLE**  
to Create Luxury Sensual Life.

Air-conditioned lobby creates a welcoming and comfortable first impression with its elegant design and climate-controlled environment. It offers residents and guests a pleasant space to wait or relax. Additionally, a dedicated drivers' lounge provides a comfortable area for chauffeurs to rest while waiting. These features enhance convenience, comfort, and the overall premium living experience.

## WELL PLANNED DROP OFF

Podium Floor

## CAR WASH POINT

Basement



**WHERE**  
Redefined Living meets Effortless Elegance.

A luxury apartment with a dedicated car wash point and a well-planned drop-off zone offers added convenience and functionality to residents. The car wash point allows easy vehicle maintenance within the premises, saving time and effort. The drop-off area is thoughtfully designed for smooth traffic flow, ensuring hassle-free pick-up and drop-off for residents and guests. These features reflect modern living standards and enhance the overall comfort and experience of luxury apartment living.



**LUXURY**  
in Each Detail with Full Satisfaction.

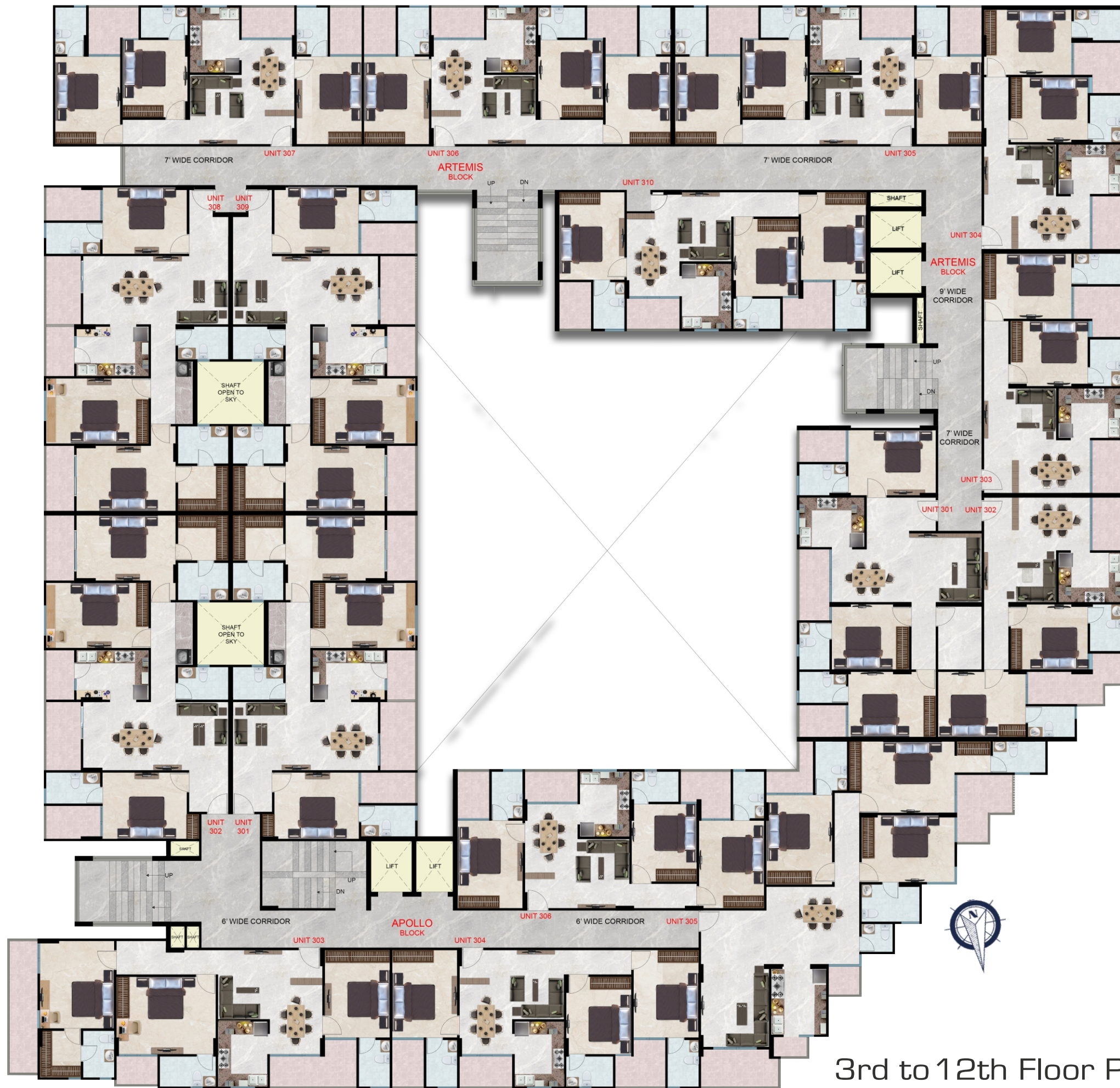
A luxury apartment offers premium living with high-end amenities, elegant design, and superior comfort. These residences often feature spacious layouts, modern interiors, advanced security systems, and facilities like swimming pools, gyms, clubhouses, and landscaped gardens. Located in prime areas, luxury apartments provide a sophisticated lifestyle with convenience, privacy, and exclusivity, making them an ideal choice for those seeking a refined urban living experience.



Stilt Floor Plan



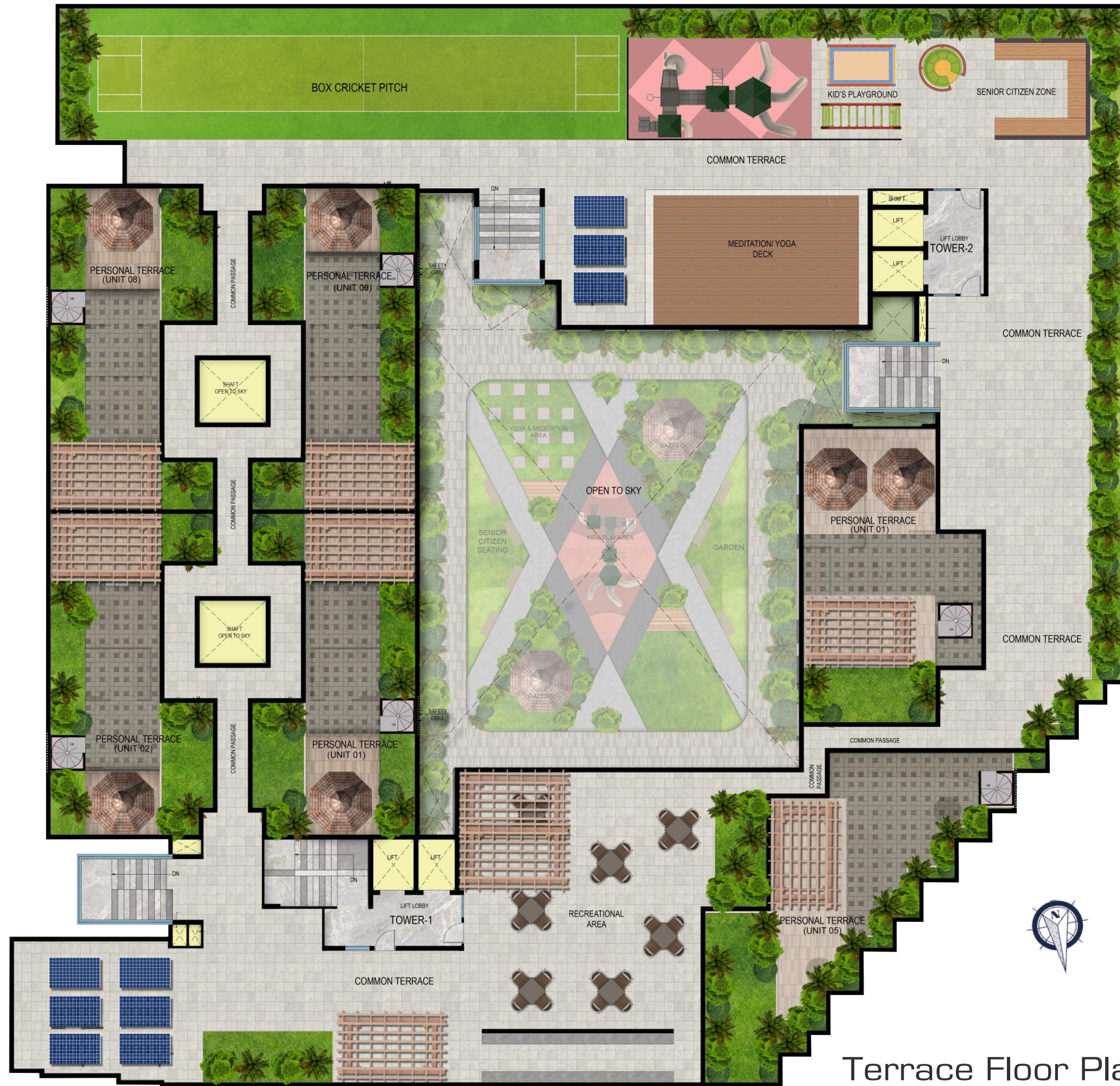




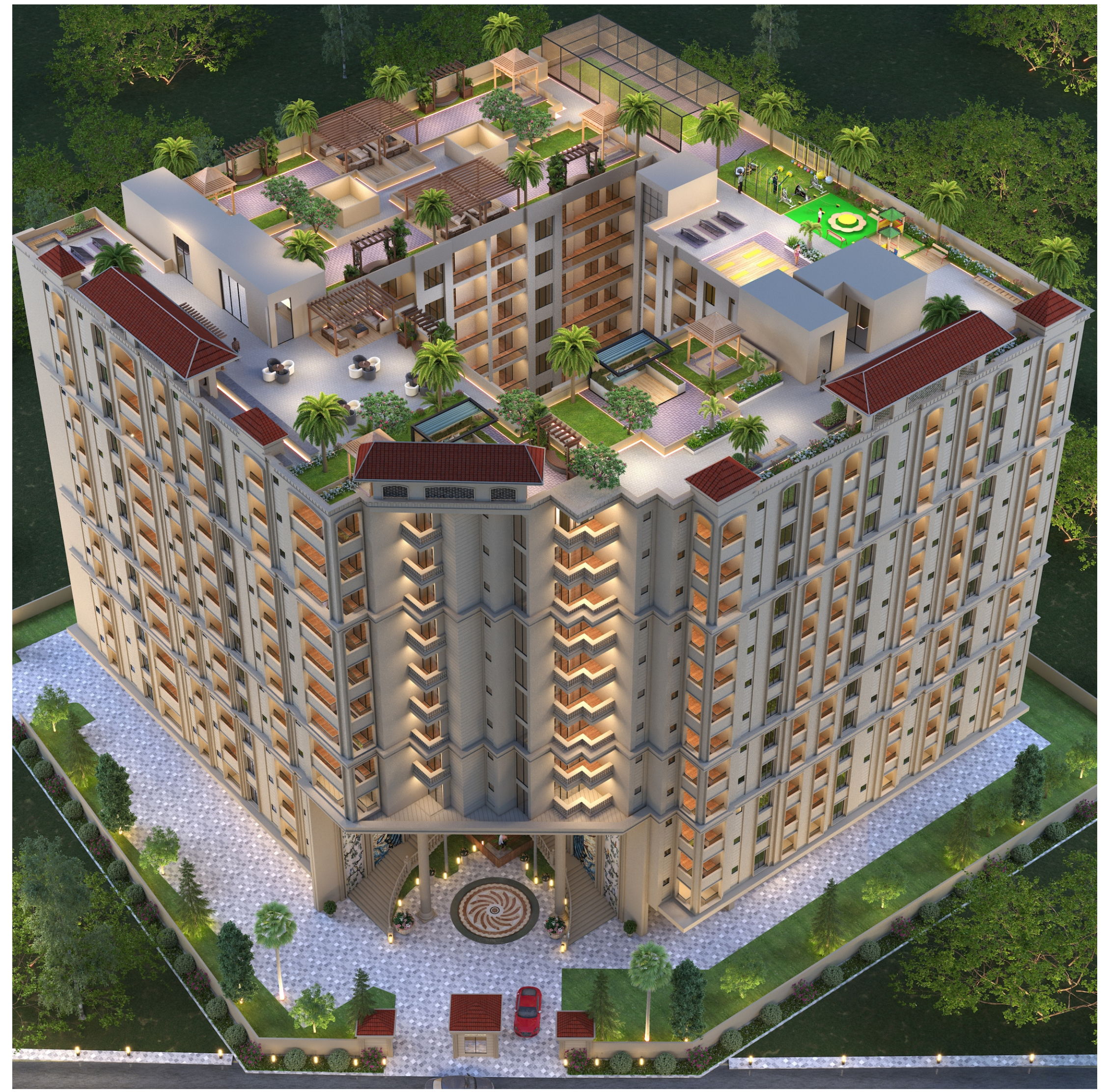
3rd to 12th Floor Plan

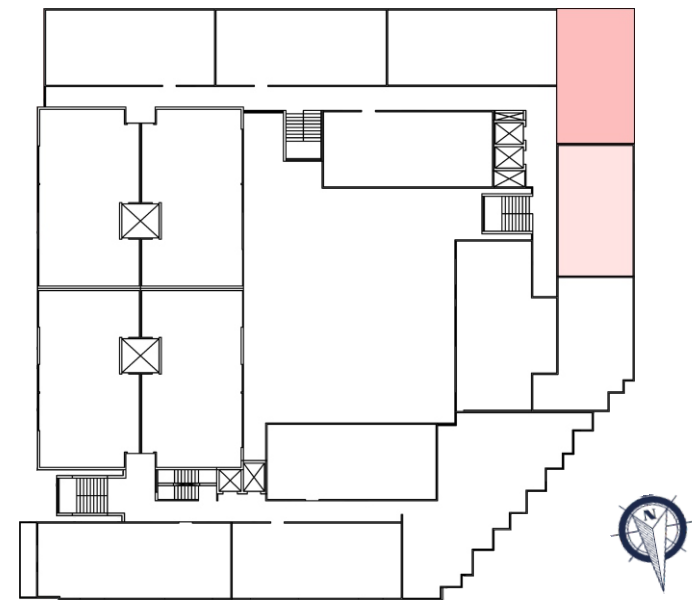


Basement Floor Plan



Terrace Floor Plan





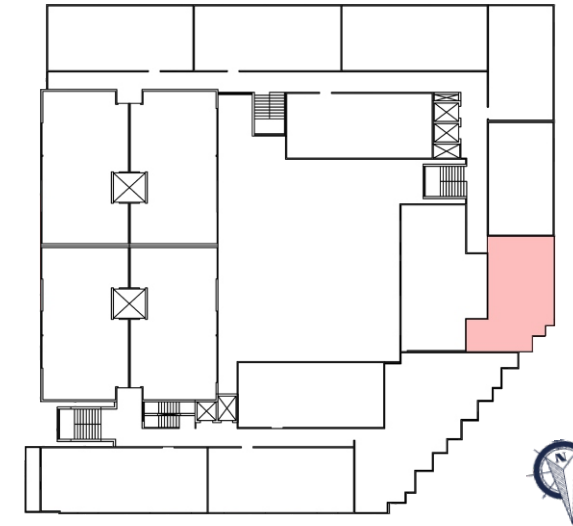
# ARTEMIS

2 BHK

103, 203, 303, 403, 503, 603  
 703, 803, 903, 1003, 1103  
 104, 204, 304, 404, 504, 604  
 704, 804, 904, 1004, 1104

Carpet Area = 744.51 sq. ft.  
 Built-up Area = 897.38 sq. ft.  
 Saleable Area = 1256.30 sq. ft.

UNIT 04 ▶



# ARTEMIS

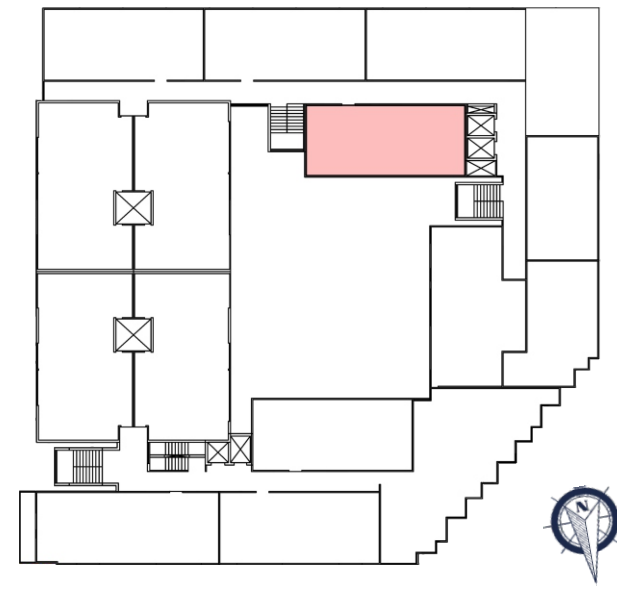
2 BHK

102, 202 302, 402, 502, 602, 702  
 802, 902, 1002, 1102

Carpet Area = 741.73 sq. ft.  
 Built-up Area = 924.49 sq. ft.  
 Saleable Area = 1294.30 sq. ft.

UNIT 02 ▶



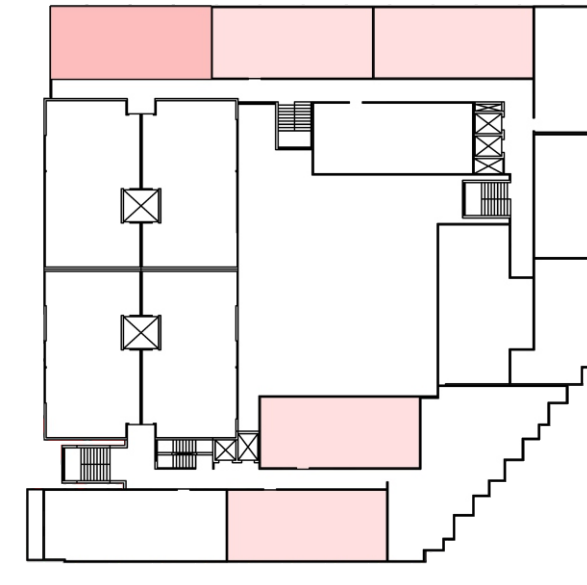


# ARTEMIS

3 BHK

110, 210, 310, 410, 510, 610, 710, 810, 910, 1010, 1110

Carpet Area = 923.48 sq. ft.  
 Built-up Area = 1126.18 sq. ft.  
 Saleable Area = 1576.65 sq. ft.



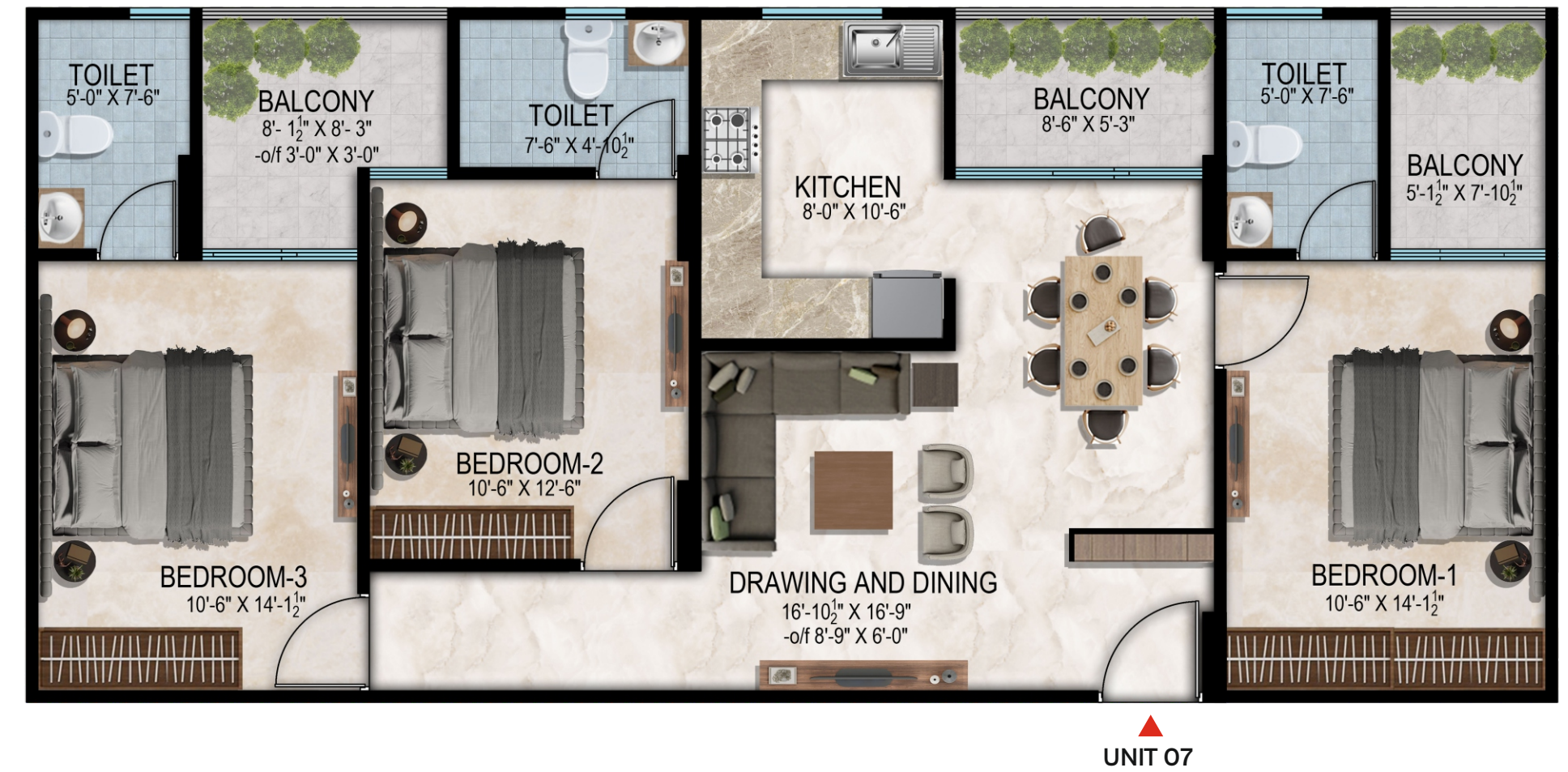
# ARTEMIS

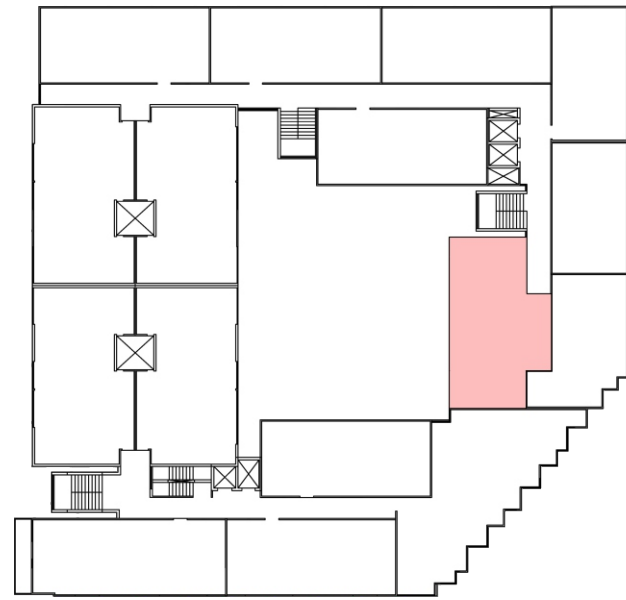
3 BHK

105, 205, 305, 405, 505, 605, 705, 805, 905, 1005, 1105  
 106, 206, 306, 406, 506, 606, 706, 806, 906, 1006, 1106  
 107, 207, 307, 407, 507, 607, 707, 807, 907, 1007, 1107

104, 204, 304, 404, 504, 604, 704, 804, 904, 1004, 1104  
 406, 506, 606, 706, 806, 906, 1006, 1106

Carpet Area = 934.36 sq. ft.  
 Built-up Area = 1141.10 sq. ft.  
 Saleable Area = 1597.50 sq. ft.





# ARTEMIS

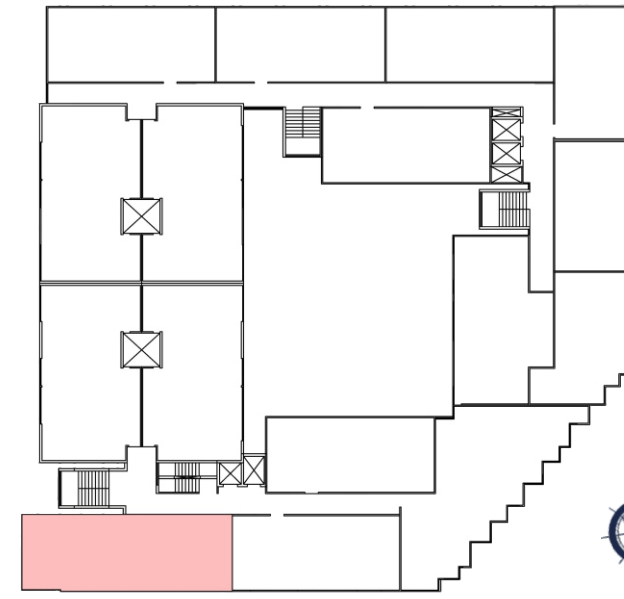
3 BHK

101, 201, 301, 401, 501, 601, 701  
801, 901, 1001, 1101

Carpet Area = 1102.14 sq. ft.  
Built-up Area = 1310.09 sq. ft.  
Saleable Area = 1834.10 sq. ft



UNIT 01



# APPOLO

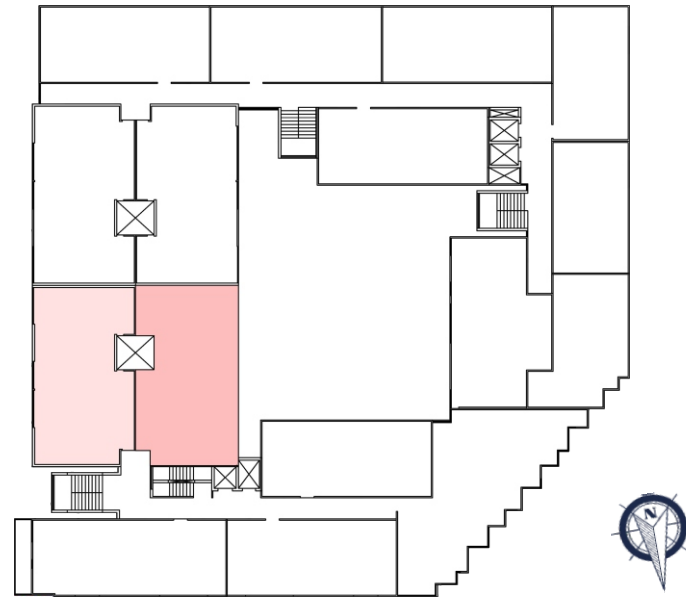
3 BHK

103, 203, 303, 403, 503, 603  
703, 803, 903, 1003, 1103

Carpet Area = 1121.20 sq. ft.  
Built-up Area = 1719.96 sq. ft.  
Saleable Area = 1987.90 sq. ft



UNIT 03



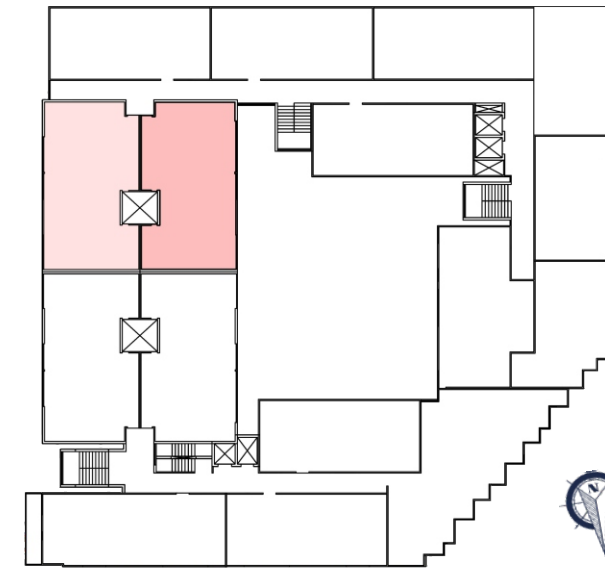
# APPOLO

3 BHK

101, 201, 301, 401, 501, 601  
701, 801, 901, 1001, 1101

102, 202, 302, 402, 502, 602  
702, 802, 902, 1002, 1102

Carpet Area = 1235.18 sq. ft.  
Built-up Area = 1522.61 sq. ft.  
Saleable Area = 2131.7 sq. ft



# ARTEMIS

3 BHK

109, 209, 309, 409, 509, 609  
709, 809, 909, 1009, 1109

108, 208, 308, 408, 508, 608  
708, 808, 908, 1008, 1108

Carpet Area = 1246.67 sq. ft.  
Built-up Area = 1533.87 sq. ft.  
Saleable Area = 2137.10 sq. ft





**APPOLO**  
3 BHK

405, 505, 605, 705, 805, 905, 1005, 1105

**Carpet Area = 1321.65 sq.ft.**  
**Built-up Area = 1655.07 sq.ft.**  
**Saleable Area = 2317.10 sq.ft**



Everything You Need is  
**VERY CLOSE to YOU**

**HOSPITALS**

- Saket Hospital - 10 Min
- Metro Mass Hospital - 12 Min
- Tagore Hospital- 10 Min
- Apex Hospital- 10 Min

**SCHOOLS**

- St. Anslem's Sr. Sec. School - 10 Min
- Cambridge Court School - 12 Min
- IIS School - 15 Min
- Ryan International School - 12 Min

**DISTANCES**

- Jawahar Circle - 18 Min
- Mansarovar Metro Station - 15 Min
- Jaipur Airport- 20 Min
- Durgapura Railway Station - 18 Min

**BANKS**

- ICICI Bank - 08 Min
- State Bank Of India - 10 Min
- Andhra Bank - 10 Min


**TEMPLE/MARKET**


- Iskcon Temple - 10 Min
- Sai Baba Temple - 12 Min
- Mansarovar Plaza - 12 Min
- New Aatish Market - 15 Min


**COLLEGE/UNIVERSITIES**


- Poddar Group Of Institutions - 10 Min
- St. Wilfred PG College - 12 Min
- Apex University - 12 Min
- IIS University - 15 Min


# SPECIFICATION


- 
- Structure**
- Earthquake Resistant R.C.C. Framed Confining I.S. Standards with Primary Steel.
  - Masonry work in AAC blocks.

- 
- Facade**
- Ultra-Modern Plush External Facade with Glass Railing/M.S. Railing.
  - Rich contemporary Texture Paint.

- 
- Flooring**
- Granite: Lobby and Lift Facia.
  - Tiles 2'x4' in Common Areas, Tiles Italian Finish in Drawing, Dinning, Kitchen, Lobby, & Bedroom. Anti-Skid Tiles in Toilets & Balconies

- 
- Toilets**
- Up to 7'-0" height Dado Tiles ok Kajaria / Somany / Johnson or equivalent.
  - CPVC/ S.S./Copper Pipe for Water Supply of Astral or equivalent.
  - Sanitary Fixtures of Kohler/equivalent.
  - CP Fitting of Kohler/equivalent.
  - Wall Hung WC with concealed Cistern & Counter Basin.

- 
- Electrical**
- Standard Quality & ISI Marked concealed Electrification of RR Kabel or equivalent.
  - Electrical Switches of Anchor / Honeywell or equivalent.
  - TV, Internet Plug Points in all Bedrooms & Living Room with Branded Modular Switches & 3 phase Electrical Supply.
  - Concelaed Copper Piping as per VRF air-conditioning (IDUs & ODUs Locations).
  - Intercom Connection provided at Guard Room.
  - Provision of Inverter Wiring.


- 
- Kitchen**
- Granite Counter Top with provision for Modular Kitchen.
  - Up to 2'-0" high Tiles above the counter or as per Interior Theme.


- 
- Finishes**
- Room Finished with POP.
  - Plastic Emulsion Paint of walls.

- 
- Water Supply**
- 24 Hrs. uninterrupted Water Supply.

- 
- Rain Water Harvesting**
- As per NBC Norms.

- 
- Vertical Transportation**
- High Quality Lifts.
  - One Passenger Lift & One service Lift for each Tower (2).
  - Granite in Stair Steps & Landings.
  - Lift facia in Granite.

- 
- Security & Safety**
- Surrounded with Compound wall & Security Cabin & Automatic Main Entrance Gate.
  - Multi Level Security System with CCTV Cameras.

- 
- Doors & Windows**
- UPVC/ Aluminium slider doors & windows on Exterior Facade.
  - 8'-0" High or up to Beam Bottom Main door.
  - Internal laminated Flush Doors of 7'0" Height.

- 
- Power Backup**
- 24 Hours 100% Power Back up for Common Area from Silent DG set.

